

# MAI

All product images are indicative only



## Single-channel open impeller



### General characteristics

| Single-channel open impeller |                 |
|------------------------------|-----------------|
| motor power                  | 0,74 kW         |
| poles                        | 4               |
| discharge                    | DN80 horizontal |
| free passage                 | 50 mm           |
| max flow rate                | 13.9 l/s        |
| max head                     | 7.0 m           |

### Electromechanical assembly

Electromechanical assembly in GJL-250 cast iron, for submerged operation. Seal set comprising 2 (two) silicon carbide mechanical seals, installed in series in inspectable oil sump. Ecological dry motor.

### Applications

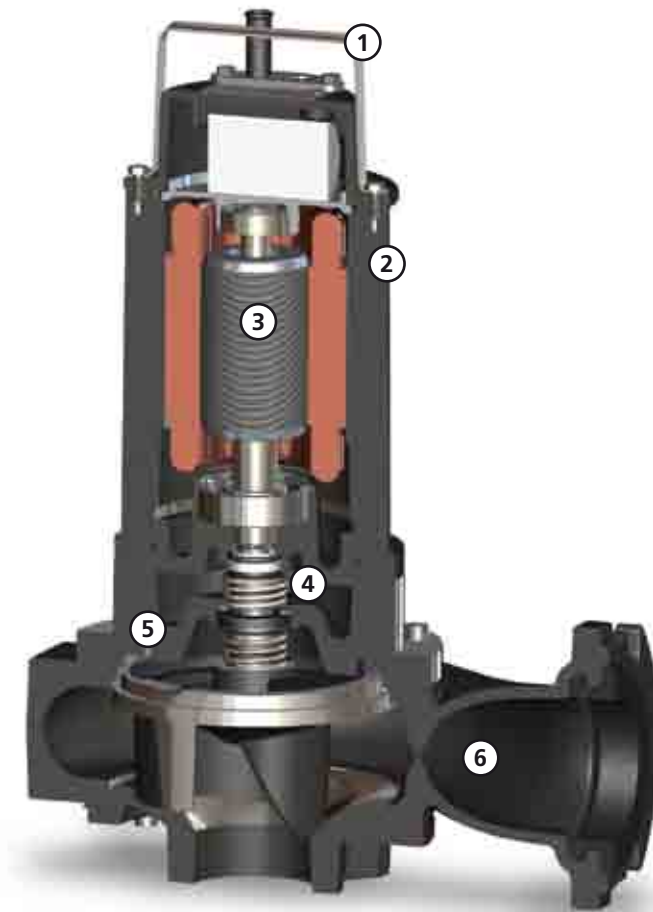
Suitable for pumping wastewater from public establishments, small sewer systems, livestock farms, the food industry and agriculture.

### Construction materials

|                                  |  |
|----------------------------------|--|
| Case                             | Cast iron EN-GJL 250                                   |
| Impeller                         | Cast iron EN-GJL-250                                   |
| Nuts and bolts                   | Stainless steel - Class A2-70                          |
| Standard gasket                  | Rubber - NBR   |
| Shaft                            | Stainless steel - AISI 420                             |
| Paint type                       | Ecological bicomponent epoxy (medium thickness 150 µm) |
| Set of standard mechanical seals | Two silicon carbide mechanical seals (2SiC)            |

### Operating limits

|                               |                      |
|-------------------------------|----------------------|
| Maximum operating temperature | 40 °C                |
| PH of treated fluid           | 6 ÷ 14               |
| Viscosity of treated fluid    | 1 mm <sup>2</sup> /s |
| Maximum immersion depth       | 20 m                 |
| Density of treated fluid      | 1 Kg/dm <sup>3</sup> |
| Maximum acoustic pressure     | 70 dB                |
| max starts per hour           | 30                   |



**Handle**  
AISI 304 stainless steel lifting and carrying handle.



**Structure**  
Constructed in GJL-250 cast iron.



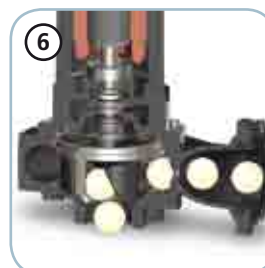
**Motor**  
Ecological dry motor with thermal protections. Single-phase models with internal capacitor. Three-phase models with motor protection relay.



**Mechanical seals**  
Two mechanical seals in silicon carbide (2SiC).



**Oil sump**  
Large oil sump to guarantee longer mechanical seal lifetime.



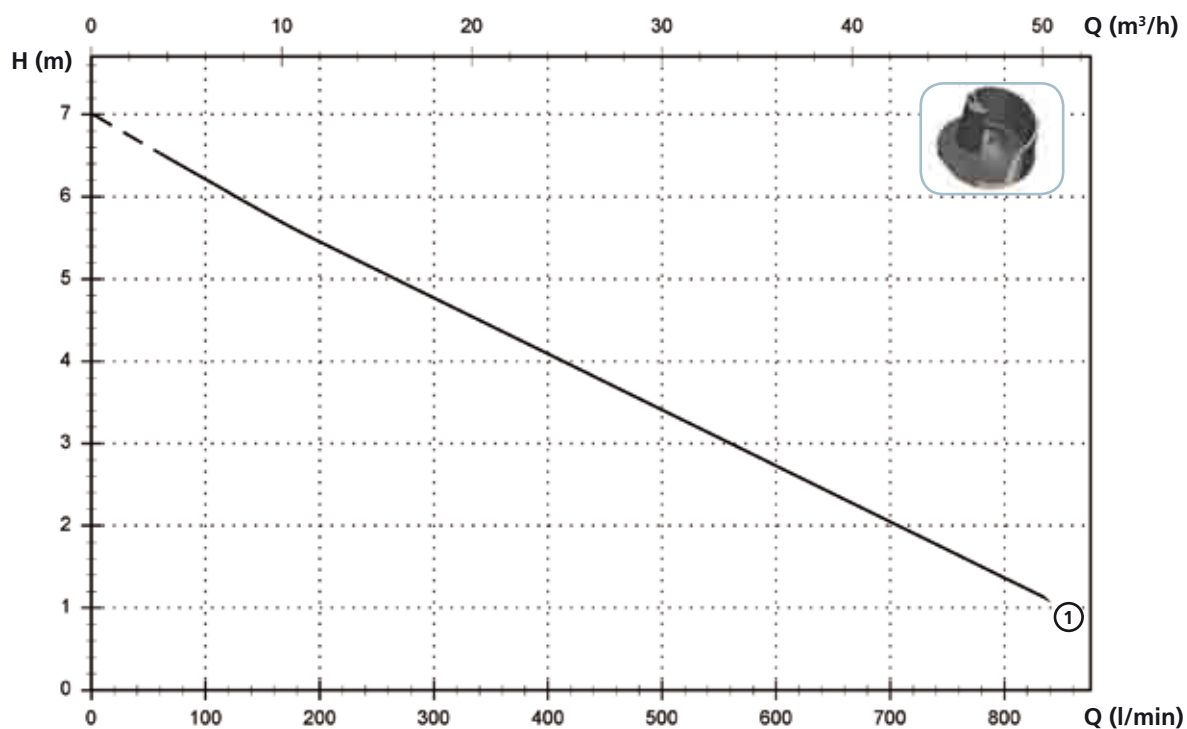
**Free passage**  
Wide free passage allowing the expulsion of solids and preventing fouling of the impeller.

# MAI

## Models with horizontal DN80 PN10-16 flanged discharge - 4 poles

### Performances

|                        | l/s               | 0   | 2   | 4    | 6    | 8    | 10   | 12   |
|------------------------|-------------------|-----|-----|------|------|------|------|------|
|                        | l/min             | 0   | 120 | 240  | 360  | 480  | 600  | 720  |
|                        | m <sup>3</sup> /h | 0   | 7.2 | 14.4 | 21.6 | 28.8 | 36.0 | 43.2 |
| ① MAI 100/4/80 A0CM/50 |                   | 6.4 | 6.1 | 5.2  | 4.4  | 3.5  | 2.7  | 1.9  |



### Technical data

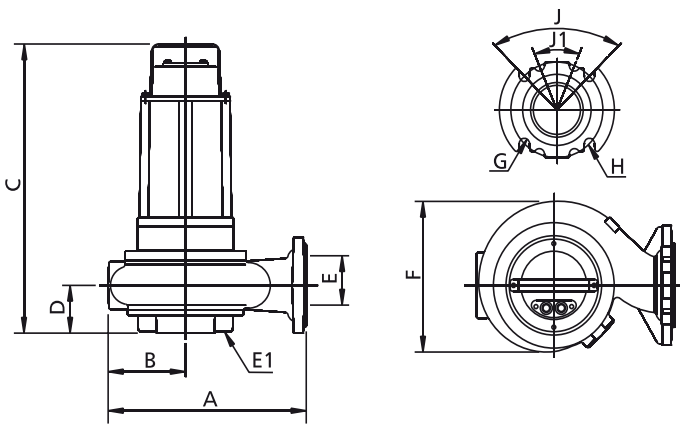
|                        | V   | Phases | P1 (kW) | P2 (kW) | A   | Rpm  | Start | Ø            | Free passage |
|------------------------|-----|--------|---------|---------|-----|------|-------|--------------|--------------|
| ① MAI 100/4/80 A0CM/50 | 230 | 1      | 1.1     | 0.74    | 5.5 | 1450 | Dir   | DN80 PN10-16 | 50 mm        |
| ① MAI 100/4/80 A0CT/50 | 400 | 3      | 1.2     | 0.74    | 2.3 | 1450 | Dir   | DN80 PN10-16 | 50 mm        |

**Versions available**

(Key to versions on page 16)

|                      | Electrical variants |   |        |             |                  |                       |             |                  |                       |        | Cooling |             |   |           | Mechanical seals |                  |      |      |       |        |
|----------------------|---------------------|---|--------|-------------|------------------|-----------------------|-------------|------------------|-----------------------|--------|---------|-------------|---|-----------|------------------|------------------|------|------|-------|--------|
|                      | N<br>A<br>E         | T | T<br>C | T<br>C<br>D | T<br>C<br>D<br>T | T<br>C<br>D<br>G<br>T | T<br>C<br>G | T<br>C<br>S<br>T | T<br>C<br>S<br>G<br>T | T<br>S | T<br>R  | T<br>R<br>G | N | CC<br>CCE | FT               | C<br>G<br>F<br>T | 2SIC | SICM | SICAL | 2SICAL |
| MAI 100/4/80 A0CM/50 |                     |   | ●      |             |                  |                       | ●           |                  |                       |        |         |             | ● |           |                  |                  | ●    |      |       |        |
| MAI 100/4/80 A0CT/50 |                     |   |        |             |                  |                       |             |                  |                       | ●      | ●       | ●           |   |           |                  |                  | ●    |      |       |        |

**Overall dimensions and weights**



|                         | A   | B   | C   | D  | E  | E1(*) | F   | G  | H   | J   | J1  | kg |
|-------------------------|-----|-----|-----|----|----|-------|-----|----|-----|-----|-----|----|
| MAI 100/4/80 A0CM(T)/50 | 345 | 135 | 485 | 80 | 80 | 65    | 255 | 18 | 160 | 90° | 45° | 42 |

Dimensions in mm

All weights and dimensions are indicative only

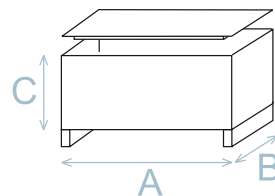
(\*) DN of the suction flange - PN6

**Packaging dimension**

|                         | A   | B   | C   |
|-------------------------|-----|-----|-----|
| MAI 100/4/80 A0CM(T)/50 | 725 | 445 | 415 |

Dimension in mm

All weights and dimensions are indicative only



**Installations available**

